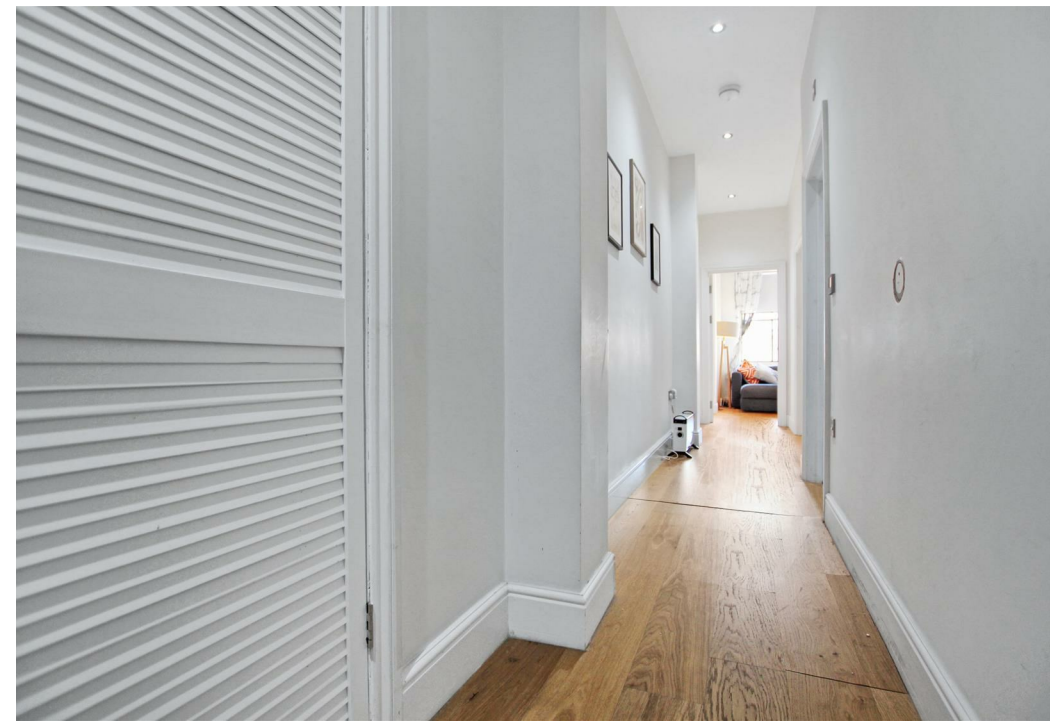
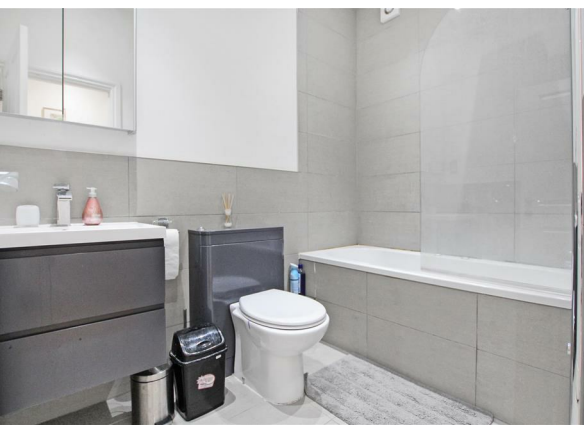
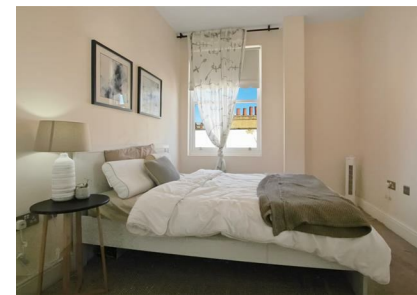


Flat 6 Kings Court Apartments 10 Rope Walk Gardens, London, London,  
E1 1DD  
£2,250 Per month  
Council Tax Band: D



This well presented, modern two bedroom flat comes fully furnished. It is superbly located moments from the City of London. Located on the third floor this property comprises of two double bedrooms, open plan living room / kitchen and bathroom.

This development is moments away from the vibrant Brick Lane and Spitalfields for a wide array of restaurants and nightlife. Transport links are excellent with Aldgate East, Tower Hill and Tower Gateway close by for easy access to the City, West End and Canary Wharf.



Flat 6 Kings Court Apartments 10 Rope Walk Gardens

London

London

E1 1DD

0208 004 0045

admin@urbankeys.co.uk

https://urbankeys.co.uk/



Energy Efficiency Rating		
	Current	Potential
Very energy efficient - lower running costs		
(92 plus) <b>A</b>		
(81-91) <b>B</b>	<b>87</b>	<b>87</b>
(69-80) <b>C</b>		
(55-68) <b>D</b>		
(39-54) <b>E</b>		
(21-38) <b>F</b>		
(1-20) <b>G</b>		
Not energy efficient - higher running costs		
<b>England &amp; Wales</b>	EU Directive 2002/91/EC	